

## **PHGDH is required for germinal center formation and is a therapeutic target in *MYC*-driven lymphoma**

Annalisa D'Avola, ... , Karen H. Vousden, John C. Riches

*J Clin Invest.* 2024;134(4):e179917. <https://doi.org/10.1172/JCI179917>.

### **Corrigendum**

Original citation: *J Clin Invest.* 2022;132(9):e153436. <https://doi.org/10.1172/JCI153436> Citation for this corrigendum: *J Clin Invest.* 2024;134(4):e179917. <https://doi.org/10.1172/JCI179917> In Figure 6A, the label for the SUDHL4 cell line was incorrect. In Figure 7G, the photographs for the 7- and 14-day time points were switched. The correct figure parts are below. The authors regret the errors.

**Find the latest version:**

<https://jci.me/179917/pdf>



# Corrigendum

## PHGDH is required for germinal center formation and is a therapeutic target in MYC-driven lymphoma

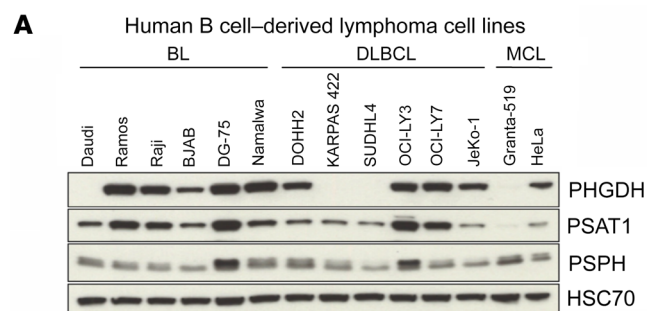
Annalisa D'Avola, Nathalie Legrave, Mylène Tajan, Probir Chakravarty, Ryan L. Shearer, Hamish W. King, Katarina Kluckova, Eric C. Cheung, Andrew J. Clear, Arief S. Gunawan, Lingling Zhang, Louisa K. James, James I. MacRae, John G. Gribben, Dinis P. Calado, Karen H. Vousden, and John C. Riches

Original citation: *J Clin Invest.* 2022;132(9):e153436. <https://doi.org/10.1172/JCI153436>.

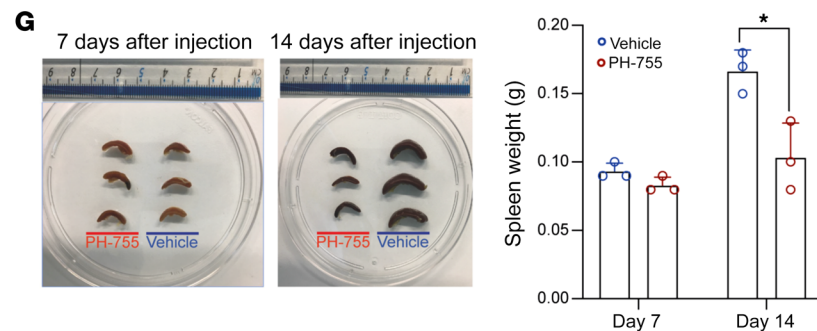
Citation for this corrigendum: *J Clin Invest.* 2024;134(4):e179917. <https://doi.org/10.1172/JCI179917>.

In Figure 6A, the label for the SUDHL4 cell line was incorrect. In Figure 7G, the photographs for the 7- and 14-day time points were switched. The correct figure parts are below.

The authors regret the errors.



**Figure 6.** Corrected panel A.



**Figure 7.** Corrected panel G.